



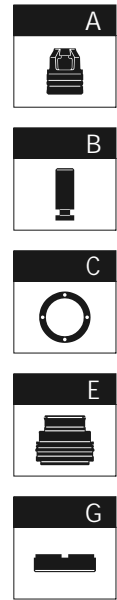
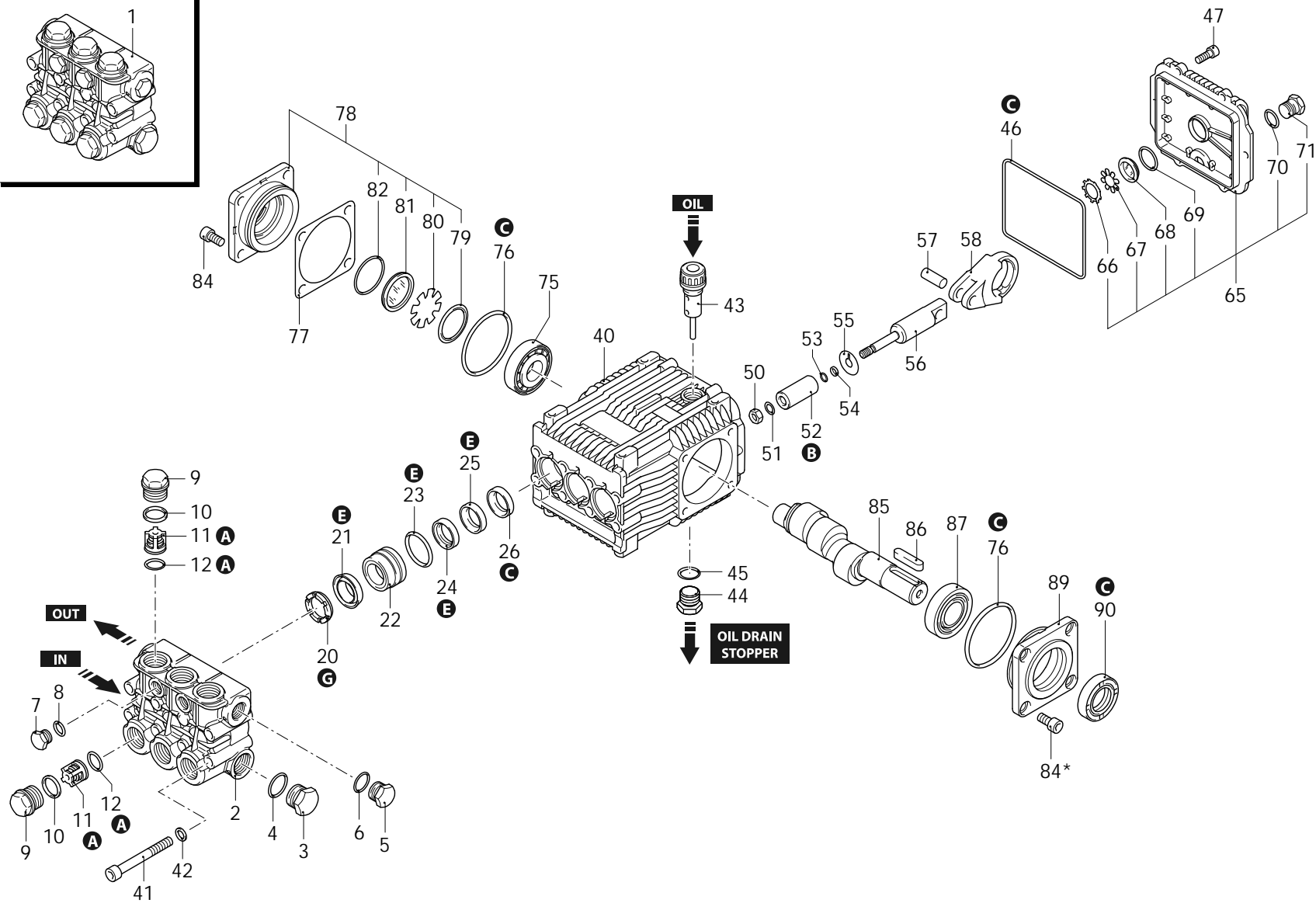
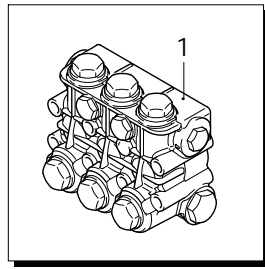
Series 228

RHW

N

1450rpm

ø 24mm



AR_s228-06_v01

29/09/2023



Series 228
RHW

N

1450rpm

∅ 24mm

P	Code	Description	Q	Note	Validity	P	Code	Description	Q	Note	Validity
1	1389296	Head assembly	∅ 18	1		67	1780690	Plate	1		
2	1380680	Head	nickel plated	1		68	1260250	Level gauge	1		
3	960870	Plug	1/2" G nickel	1	Screw with Loxeal 55-14 / C=30Nm	69	1140450	O-ring	∅ 20,24x2,62	1	Lubricate with grease Molykote PG54
4	180101	O-ring	∅ 17,5x2	1	Lubricate with grease Molykote PG54	70	740290	O-ring	∅ 14x1,78	1	Lubricate with grease Molykote PG54
5	1981180	Plug	3/8" G nickel	1	Screw with Loxeal 55-14 / C=20Nm	71	1981180	Plug	3/8" G nickel	1	Screw with Loxeal 55-14 / C=20Nm
6	740290	O-ring	∅ 14x1,78	1	Lubricate with grease Molykote PG54	75	2280340	Bearing		1	
7	1380690	Plug	1/4" G nickel	2	Screw with Loxeal 55-14 / C=15Nm	76	640030	O-ring	∅ 59,99x2,62	2	
8	820510	O-ring	∅ 10,82x1,78	2		77	1380120	Shim 0.10mm	1		
9	1380740	Plug	nickel	6	Screw with Loxeal 55-14 / C=54Nm	77	1380130	Shim 0.19mm	1		
10	960160	O-ring	∅ 17,86x2,62	6	Lubricate with grease Molykote PG54	77	1380530	Shim 0.25mm	1		
11	1389051	Complete valve		6		77	1382810	Shim 0.05mm	1		
12	880833	O-ring	∅ 15,54x2,62	6	90 Sh	78	2349011	Cover	1		
20	960110	Ring	support ∅ 18	3		79	1941290	Ring	1		
21	2281730	Water seal	∅ 18 PTFE	3		80	1941260	Plate	1		
22	2281750	Piston guide	front ∅ 18	3		81	1941270	Level gauge	1		
23	961240	O-ring	∅ 31,47x1,78	3		82	100410	O-ring	∅ 34,6x2,62	1	
24	2281620	Gasket	∅ 18 PTFE	3		84	850370	Screw	TCEI M8x16	4	C=24,5Nm
25	2281740	Piston guide	rear ∅ 18	3		84*	850370	Screw	TCEI M8x16	4	C=24,5Nm
26	880520	Ring	seal	3		85	2280060	Shaft	1 marked	1	
40	2340260	Pump body		1		86	1380520	Key		1	
41	820150	Screw	TCEI M8x70	8	C=25Nm	87	1383140	Bearing		1	
42	1381850	Washer		8		89	2340280	Support	open bearing	1	
43	880130	Oil plug	with oil dipstick	1		90	2282260	Ring	seal	1	Assemble with tool [2281010]
44	1981180	Plug	3/8" G nickel	1	Screw with Loxeal 55-14 / C=20Nm	A	42328	Valve kit		1	
45	740290	O-ring	∅ 14x1,78	1	Lubricate with grease Molykote PG54	B	2500	Piston kit	∅ 18	1	
46	1780510	O-ring	∅ 106x3	1		C	1855	Oil seal kit		1	
47	1343510	Screw	TCEI M6x14	6	C=10Nm	E	42329	Water seal kit	∅ 18	1	
50	1260110	Nut	M8	3	Screw with Loxeal 55-14 / C=12Nm	G	1829	Support ring kit	∅ 18	1	
51	1260100	Washer		3							
52	1383230	Piston	∅ 18	3	Lubricate with grease Molykote PG54						
53	480480	O-ring	∅ 4,48x1,78	3							
54	1080550	Ring	anti-extrusion	3							
55	1383350	Plate		3							
56	1383240	Piston	guide	3							
57	1380060	Pin		3							
58	1383020	Connecting-rod	bronze	3							
65	2349012	Cover		1							
66	1260430	Ring		1							

Revision: 1

Oil type: ISO VG220

Attachment:

Date: 29/09/2023

Oil quantity: 0,435 Kg

C= Tightening torque (Tolerance +0 ÷ -10%)

* = Not present for electric pump