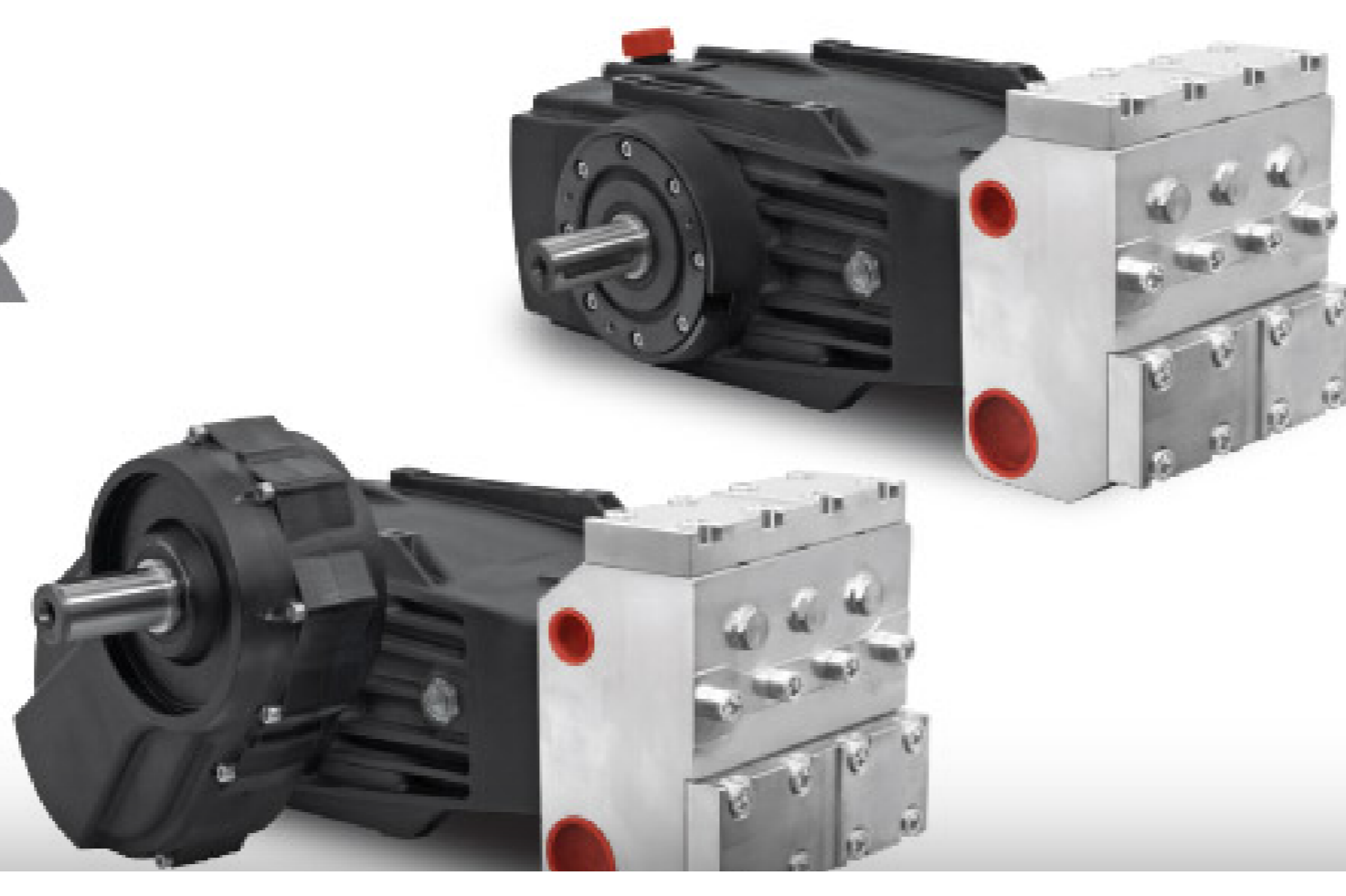


ES ESR



We inform that the cookies used in this website are "technical cookies" necessary in order to improve browsing, but also "analysis cookies" to make statistical analyses and "third party cookies". You can get more details and block the use of all or just some cookies, reading the extended privacy policy. If you continue browsing this site, it is implied that you express your consent to the use of the aforementioned cookies. [I Agree](#) [Read More](#)

Pumps | Accessories | Applications and Uses | More Informations

ES – ESR

Triplex plunger pump in line

- Pump body: aluminium alloy
- Symmetric crankcase featuring top and bottom fixing for easy right to left shaft conversion
- Head: stainless steel
- Camshaft: forged steel
- Splash lubrication
- Shaft support tapered roller bearings oversized for long duration
- Connecting rods: steel with thin-shell bearings
- Guiding piston: stainless steel
- Solid ceramic plungers
- PATENTED stainless steel suction/delivery valves featuring spherical design of sealing areas
- Seals: high dependability with low-pressure lubrication and recirculation chamber
- Versions in direct drive mount or with side gearbox available in 3 gear ratios and positionable on the right or left of the pump at 0° – 45° – 90° – 135° – 180° from the horizontal plane (see drawing)
- *On request Stainless Steel AISI 316

Routine maintenance includes easy operations such as: oil check & change, check and possible replacement of seals.

Code	Model	rpm	l/min	US gpm	bar	psi	Mpa	kW	HP	kg	lb
6920-0001	ES 106/250	1200	106	28	250	3625	25	52	71	92	202
6920-0012	ESR 106/250	1500	106	28	250	3625	25	52	71	107	235
6920-0013	ESR 106/250	1800	106	28	250	3625	25	52	71	107	235
6920-0014	ESR 106/250	2200	106	28	250	3625	25	52	71	107	235
6920-0006	ES 133/210	1200	133	35	210	3045	21	55	74	92	202
6920-0015	ESR 133/210	1500	133	35	210	3045	21	55	74	107	235
6920-0016	ESR 133/210	1800	133	35	210	3045	21	55	74	107	235
6920-0017	ESR 133/210	2200	133	35	210	3045	21	55	74	107	235
6920-0003	ES 153/200	1200	153	40	200	2900	20	60	81	92	202
6920-0018	ESR 153/200	1500	153	40	200	2900	20	60	81	107	235
6920-0019	ESR 153/200	1800	153	40	200	2900	20	60	81	107	235
6920-0020	ESR 153/200	2200	153	40	200	2900	20	60	81	107	235
6920-0021	ES 185/160	1200	185	49	160	2320	16	58	79	92	202
6920-0022	ESR 185/160	1500	185	49	160	2320	16	58	79	107	235
6920-0023	ESR 185/160	1800	185	49	160	2320	16	58	79	107	235
6920-0024	ESR 185/160	2200	185	49	160	2320	16	58	79	107	235
6920-0007	ES 220/140	1200	220	58	140	2030	14	60	82	92	202
6920-0025	ESR 220/140	1500	220	58	140	2030	14	60	82	107	235
6920-0026	ESR 220/140	1800	220	58	140	2030	14	60	82	107	235
6920-0028	ESR 220/140	2200	220	58	140	2030	14	60	82	107	235

Flushing systems available on request on selected versions

Max Inlet pressure: 3 bar – 43.5 p.s.i.

Oil Capacity: 5,65 l 80W 90

Oil Capacity with Gearbox: 7,10 l 80W 90

Connection Kit

Available in hot water version max. 85°C
 Disponible en version para agua caliente máx. 85°C
 Erhältlich in der Ausführung für max. 85°C heisses Wasser
 Disponibile in versione per acqua calda máx. 85°C
 Disponible en version pour eau chaude máx. 85°C

Outlet
 Impulsión
 Förderleitung
 Mandata
 Refoulement

Inlet
 Aspiración
 Ansaugung
 Aspiratione
 Aspiration

Pressure gauges
 Manómetros
 Manometer
 Manomètres

2802 0301	1" G
2802 0307	1" 3/8" G
2802 0308	1" 1/2" G
2802 0307	1" G
2802 0304	1" G-80
2802 0307	1" G-80
2802 0307	1" G-80
2802 0307	1" G-80
2802 0307	1" G-80
2802 0307	1" G-80
2802 0307	1" G-80
2802 0307	1" G-80
2802 0307	1" G-80
2802 0307	1" G-80
2802 0307	1" G-80
2802 0307	1" G-80
2802 0307	1" G-80

Download Data Sheet

Download Spare Parts

Download Manual

Download General Part

Accessories



Guns with Lances



Unloader Valves



Pulsation Dampeners

Applications and Uses

ES – ESR



MUNICIPALITIES



MILITARY



PETROCHEMICAL

Contact us for more informations

Your Name (required)

Your Email (required)

Subject

Your Message

*In compliance with articles 7–8–9 of E.R. 2016/679 I declare that I have [read the information](#) and consent to the processing of data for the purposes as per point a) I authorize I do not authorize

Consent for "direct marketing" (this consent is optional). I declare that I have [read the information](#) and consent to the processing of data for the purposes as per point b) of this privacy policy and therefore consents to the receipt of advertising material/communications, such as brochures, invitations, newsletters, by post, e-mail, telephone, fax, sms and mms messages deriving from the Data Controller. It is herewith understood that the undersigned has the specific right to revoke this consent at any time, by contacting the Data Controller. I authorize I do not authorize

[SEND](#)

Share This Product. Choose Your Platform!

[f](#) [t](#) [in](#) [G+](#) [p](#) [e](#)