**FEATURES**

- Ideal for use in systems which incorporate a gasoline engine.
- Eliminates back pressure in system when pulling a manual start engine.
- Brass and stainless steel construction.
- Adjustable pressure control knob

Note: For proper operation of the ZKHM Unloader, it must be mounted as shown in the upright position.

**SPECIFICATIONS**

Part Number		ZKHM (without adjusting knob) ZKHM1
Maximum Volume		10.8 GPM
Maximum Discharge Pressure		0 to 3000 PSI
Maximum Temperature		165° F
Port Size	Inlet	3/8"-19 BSP-F
	Outlet	1/4"-19 BSP-F
	Outlet	3/8"-19 BSP-M
	Bypass (2)	3/8"-19 BSP-F
Dimensions		2.75" x 3.75" x 6.5"
Weight		2.5 lb.

**General Pump recommends using a safety relief device in conjunction with this unloader valve when installed on a positive displacement pump. General Pump is not liable and assumes no responsibility when used in a customer's high pressure system.**



General Pump  
is a member of  
the Interpump Group

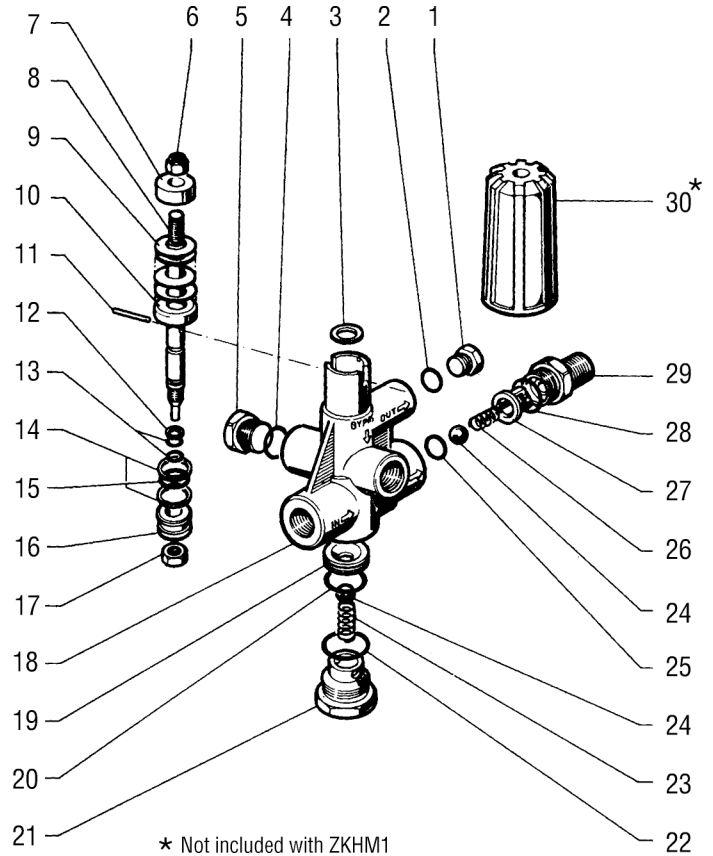


300106 Rev. F  
08-18



### PARTS LIST

No.	Part No	Description	QTY.
1	98204100	Cap	1
2*	90358500	O-Ring	1
3	96710200	Washer	1
4*	90383300	O-Ring	1
5	98210000	Cap	1
6	92220800	Nut	1
7	36311364	Spring Guide	1
8	36310766	Piston Guide	1
9*	94849500	Washer	20
10	36310976	Spring Plate	1
11	97614300	Pin	1
12*	90502500	Anti-extrusion Ring	1
13*	90357500	O-Ring	2
14*	90508000	Anit-extrusion Ring	2
15*	90383100	O-Ring	1
16	36311266	Piston	1
17	94444000	Nut	1
18	36320101	Body	1
19*	36310266	Valve Seat	1
20*	90359400	O-Ring	1
21	36310370	Cap	1
22*	90384700	O-Ring	1
23*	94737400	Spring (OPTIONAL)	1
24*	97483800	Ball	2
25*	90382200	O-Ring	1
26*	94735500	Spring	1
27*	36310541	Valve Guide	1
28*	90384300	O-Ring	1
29	36310570	Nipple	1
30	36311002	Knob	1
*	K72	Repair Kit	



**Note:** For proper operation of the HM Unloader, it must be mounted in the vertical position. The optional spring (item #23) must be used if the unloader is mounted in any position other than vertical.

